



OIL HOSE END GUN WITH DIGITAL METER

MODEL NO: **AK4565D.V2**

Thank you for purchasing a Sealey product. Manufactured to a high standard, this product will, if used according to these instructions, and properly maintained, give you years of trouble free performance.

IMPORTANT: PLEASE READ THESE INSTRUCTIONS CAREFULLY. NOTE THE SAFE OPERATIONAL REQUIREMENTS, WARNINGS & CAUTIONS. USE THE PRODUCT CORRECTLY AND WITH CARE FOR THE PURPOSE FOR WHICH IT IS INTENDED. FAILURE TO DO SO MAY CAUSE DAMAGE AND/OR PERSONAL INJURY AND WILL INVALIDATE THE WARRANTY. KEEP THESE INSTRUCTIONS SAFE FOR FUTURE USE.



Refer to instruction manual



Wear protective gloves



Wear eye protection



Wear protective clothing

1. SAFETY

- WARNING!** Ensure health & safety, local authority, and general workshop practice regulations are strictly adhered to when using this equipment.
- ✓ Familiarise yourself with product application and limitations, as well as the specific potential hazards peculiar to this product. the pump station in good condition (use an authorised service agent).
- ✓ Replace or repair damaged parts. Use genuine parts only. Non authorised parts will invalidate the warranty.
- ✓ Use only to pump oils up to SAE 150 viscosity.
- ✓ Ensure safety eye protection and protective clothing are worn when using this product.
- ✓ Keep the work area clean, uncluttered and ensure there is adequate lighting.
- ✓ Maintain correct balance and footing. Ensure the floor is not slippery and wear non slip shoes.
- ✓ Keep children and unauthorised persons away from the working area.
- ✓ After use, drain any fluids from the equipment before storage.
- ✓ Dispose of waste liquids in accordance with local authority regulations.
- ✗ **DO NOT** exceed the maximum pressure of 750psi.
- ✗ **DO NOT** point the nozzle at people or animals.
- ✗ **DO NOT** use the equipment near open flames.
- ✗ **DO NOT** smoke whilst using this equipment.
- ✗ **DO NOT** use to extract corrosive fluids.
- ✗ **DO NOT** dismantle, tamper with or adapt the equipment for any purpose other than for which it is designed.
- ✗ **DO NOT** use the unit if it has been dropped or mishandled, check the unit to ensure there is no damage.
- ✓ Keep the pump clean and store in a safe dry, childproof location.
- WARNING! DO NOT** allow uncontrolled discharge of fluids thus polluting the environment. All liquids must be disposed of according to local authority regulations.

2. INTRODUCTION

Robust oil dispensing gun incorporating digital meter, manual shut-off and tough rubber protection guard. Fitted with flexible extension and non-drip nozzle. Easy-to-read 5-digit LCD display with resettable individual or cumulative totals. Please note that this gun is not approved for the resale of oil.

3. SPECIFICATION

Model No:AK4565D
 Maximum Flow Rate: 35L/min
 Accuracy: ±0.5%
 Inlet Size: 1/2" BSP
 Battery Lithium CR2 3V 1400mAh

4. ASSEMBLY

- 4.1. Remove the blanking plug from the outlet end of the meter. Ensure that the threads on the nozzle pipe assembly are clean and apply some liquid thread sealant onto the male connection. Screw both parts together and tighten.
NOTE: DO NOT apply too much thread sealant and ensure that none gets into the meter.
- 4.2. Remove the blanking plug from the handle end and connect to the male end of the supply hose.
 - WARNING! DO NOT** over tighten as this may cause damage to the swivel connection.
 - WARNING!** Ensure that the system pressure does not exceed the 750psi of the digital meter.



5. OPERATION

5.1. OPERATING THE GUN

- **WARNING!** Ensure that the trigger is not depressed before opening the nozzle valve.
- 5.1.1. Press the Reset button for 1 sec to zero the display.
- 5.1.2. With the nozzle pointing into the receiving container, open the nozzle valve as shown in fig.1.
- 5.1.3. Depress the trigger and dispense the liquid the amount dispensed is shown on the display (fig.2.4).
- 5.1.4. Release trigger and close the nozzle valve.

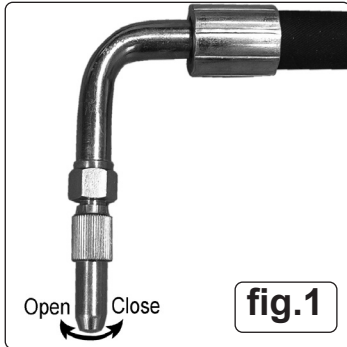


fig.1

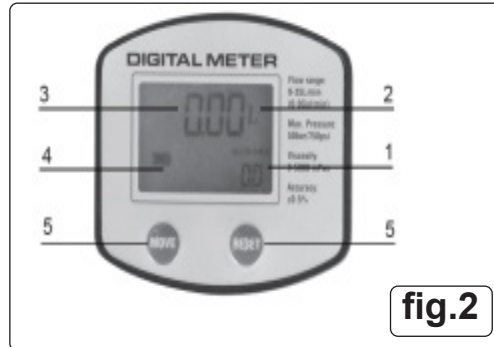


fig.2

5.2. LCD INTERFACE USAGE

- 5.2.1. User Buttons (fig.2)
 1. LCD displays delivery volume and totals
 2. Units: L, GAL, PT, QT
 3. Two decimal place values
 4. Low battery indicator
 5. MOVE and RESET buttons
- 5.2.2. Display key (fig.3)
 1. Volume since last RESET
 2. Battery state
 3. Calibration mode indicator
 4. Reset to zero indicator
 5. Total register
 6. Flow rate mode
 7. Units (Lts/gall/pint/quart)
- 5.2.3. MOVE / RESET Usage (fig.2.5)
 - MOVE key enters 'calibration' mode
 - RESET key for register and total
 - Both keys pressed enters 'configuration' mode
- 5.2.4. To RESET current total (fig.4)
 - From standby press RESET
 - All segments light up
 - Current total resets to 0.00
- 5.2.5. To display correction factor and Total (fig.5)
 - Hold MOVE and RESET for 3 seconds
 - Value "1.4000" is correction factor.
 - "1234567" overall total
- 5.2.6. To change Units (fig.6)
 - Hold MOVE and RESET for several seconds
 - Area 2 in fig.2 shows units
 - Press RESET to change units
 - Press and hold MOVE to confirm choice

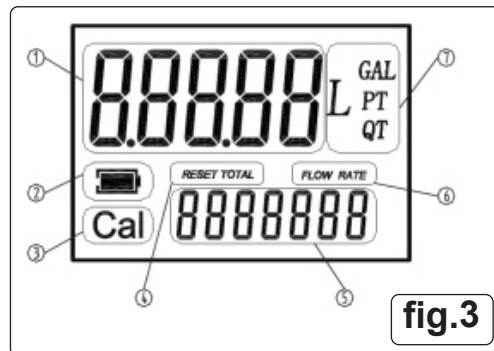


fig.3

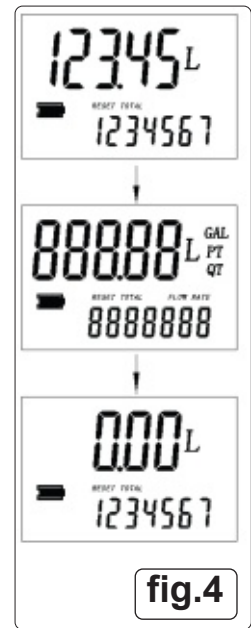


fig.4



fig.5

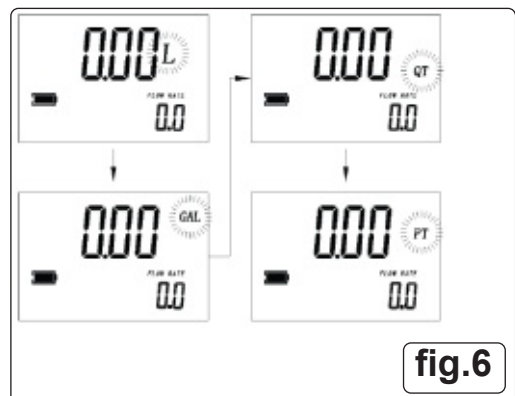


fig.6

5.3. DETERMINING THE CORRECTION FACTOR

- 5.3.1. Dispense at least 1 litre of liquid into a calibrated container.
- 5.3.2. Record the quantity of liquid in the container and record the quantity of liquid dispensed as indicated on the meter display. Press the Move + Reset buttons (fig.2.5 and fig.2.5) simultaneously to display the current correction factor.

$$\frac{\text{Qty Dispensed}}{\text{Qty Indicated}} \times \text{Current Correction Factor} = \text{New Correction Factor.}$$

5.4. ALTERING CORRECTION FACTOR DIRECTLY

- 5.4.1. Wait for meter to go to standby (fig.7).
- 5.4.2. Reset total (5.2.4) fig.8 to zero.

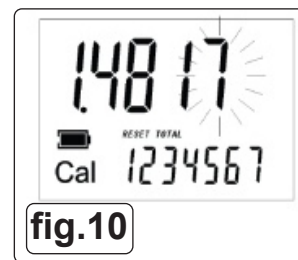
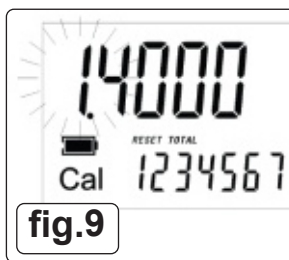


fig.7



fig.8

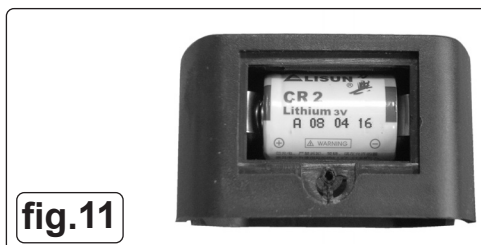
- 5.4.3. Press and hold MOVE key until all digits illuminate and display shows 'Cal' (fig.9).
- 5.4.4. Press RESET to set digit values (from right to left) (fig.10).
- 5.4.5. Once value is correct hold down MOVE key until Cal mode quits.
- 5.5. ALTERING CORRECTION FACTOR INDIRECTLY**
- 5.5.1. Wait for meter to go to standby (fig.7).
- 5.5.2. Reset the total (5.2.4) fig.8 to zero.
- 5.5.3. Dispense into measuring container (minimum 5 litres) and record.
- 5.5.4. If displayed value does not match actual measured value press and hold MOVE key until each digit reads as per the measured value. Press MOVE key to visit each digit in turn.
- 5.5.5. Once value is correct (i.e. matches measured value) press and hold MOVE key until Cal mode quits (fig.8).



6. MAINTENANCE

6.1. CHANGING THE BATTERY

- 6.1.1. Battery type: Lithium CR2 3V 1400mAh.
- 6.1.2. Remove the rubber protective cover from the meter.
- 6.1.3. Remove the screw and cover from the side of the meter.
- 6.1.4. Remove and replace battery (fig.11).
- 6.1.5. Replace cover and secure with screw.
- 6.1.6. Replace the protective rubber cover.
- 6.2. Check the unit connections before each use.
- 6.3. Check the nozzle valve for leaks, if it does not seal, replace before using.



WEEE REGULATIONS

Dispose of this product at the end of its working life in compliance with the EU Directive on Waste Electrical and Electronic Equipment (WEEE). When the product is no longer required, it must be disposed of in an environmentally protective way. Contact your local solid waste authority for recycling information.



BATTERY REMOVAL SEE SECTION 6

Under the Waste Batteries and Accumulators Regulations 2009, Jack Sealey Ltd are required to inform potential purchasers of products containing batteries (as defined within these regulations), that they are registered with Valpak's registered compliance scheme. Jack Sealey Ltd Batteries Producer Registration Number (BPRN) is BPRN00705.



ENVIRONMENT PROTECTION

Recycle unwanted materials instead of disposing of them as waste. All tools, accessories and packaging should be sorted, taken to a recycling centre and disposed of in a manner which is compatible with the environment. When the product becomes completely unserviceable and requires disposal, drain any fluids (if applicable) into approved containers and dispose of the product and fluids according to local regulations.

Note: It is our policy to continually improve products and as such we reserve the right to alter data, specifications and component parts without prior notice. Please note that other versions of this product are available. If you require documentation for alternative versions, please email or call our technical team on technical@sealey.co.uk or 01284 757505.

Important: No Liability is accepted for incorrect use of this product.

Warranty: Guarantee is 12 months from purchase date, proof of which is required for any claim.

Sealey Group, Kempson Way, Suffolk Business Park, Bury St Edmunds, Suffolk. IP32 7AR



01284 757500



01284 703534



sales@sealey.co.uk



www.sealey.co.uk